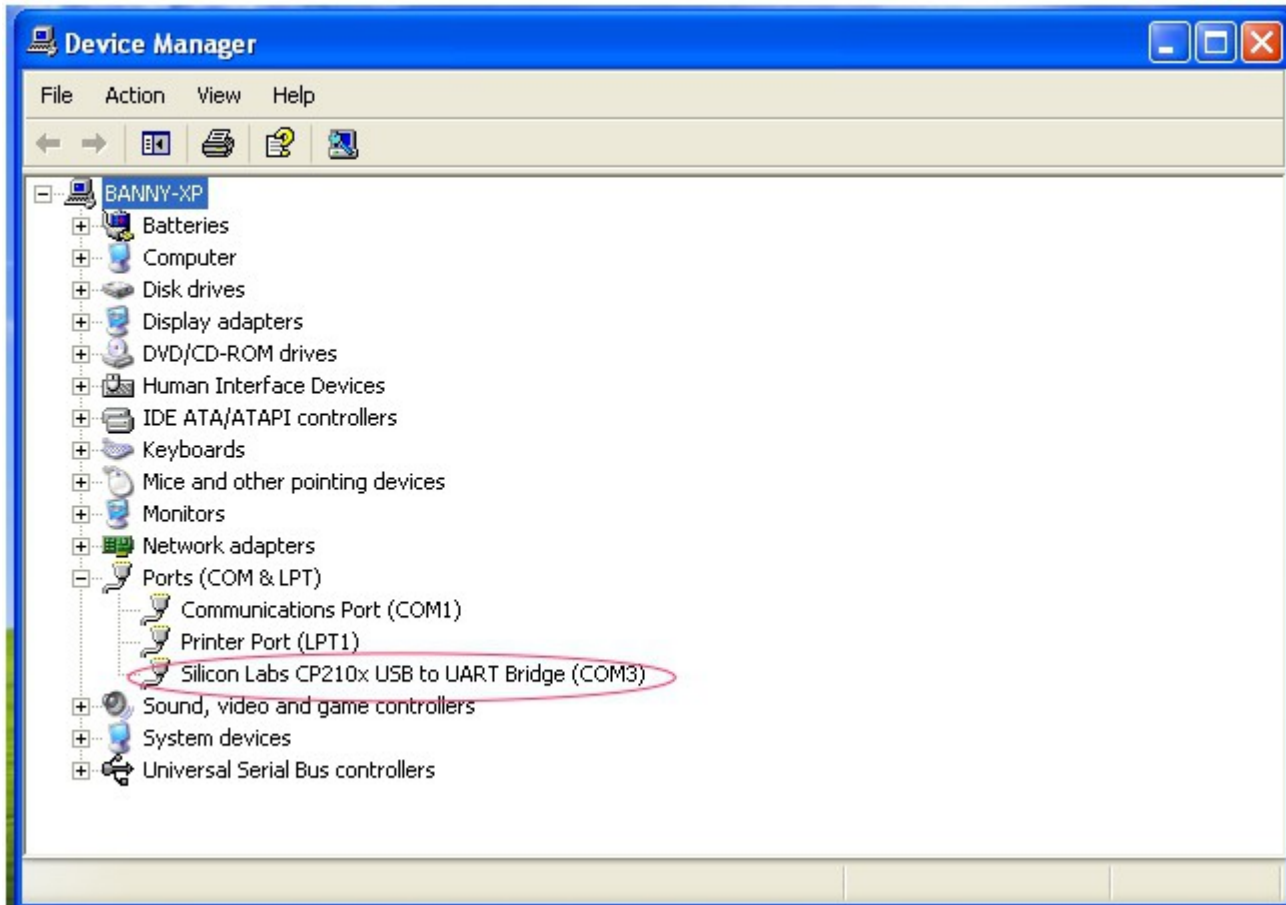


HCS USB configuration for remote programming

This application note describe how to configure the USB port for HCS remote programming use.

HCS remote programmable power supply with USB model can connected to PC through USB cable. Beside using Manson bundled PC control software, it can also be controlled by HCS command set.

Manson HCS power supply is using a USB to serial bridge design for remote connection. When it connected to PC, it will converted as COM port as following picture. E.g. COM3



If the COM port does not come up, please check USB driver probably installed. The USB driver is come with HCS software CD. Then it can program as stand COM port.

The default COM port setting;

baudrate : 9600
Data bits : 8 bit
stop bit : 1
Parity : None

The HCS then can be programmed by send ASCII commend to this COM3.

Please refer to HCS manual for commend set list.